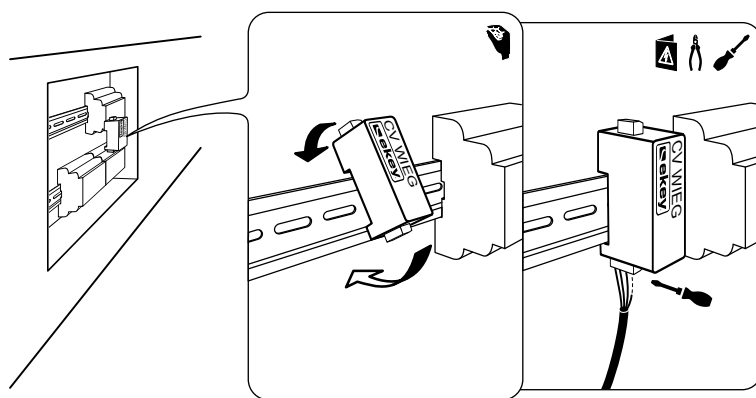
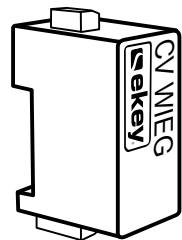


1x



1

1x

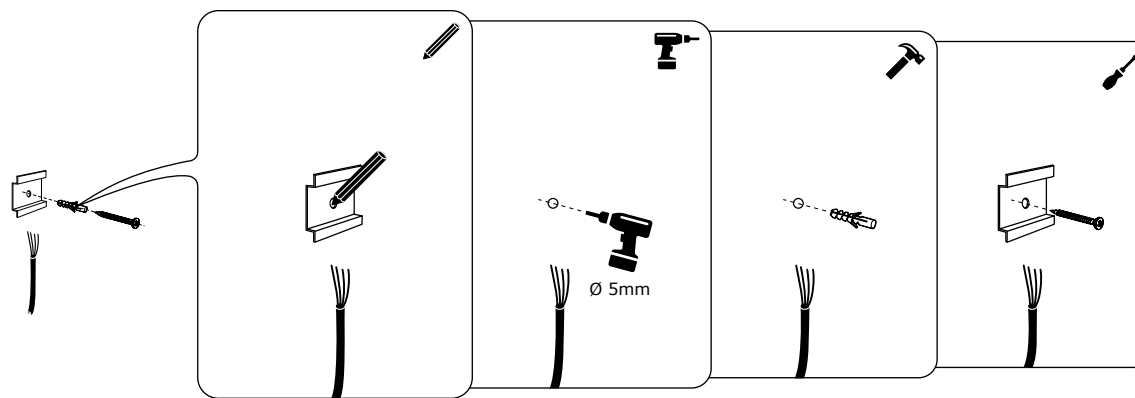
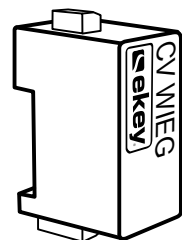
1x



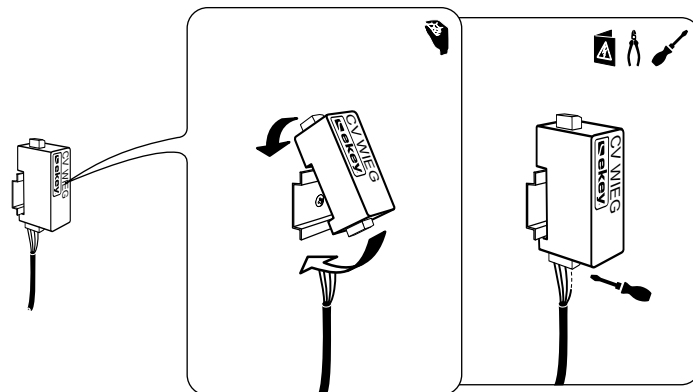
1x



1x



1



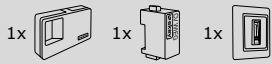
2



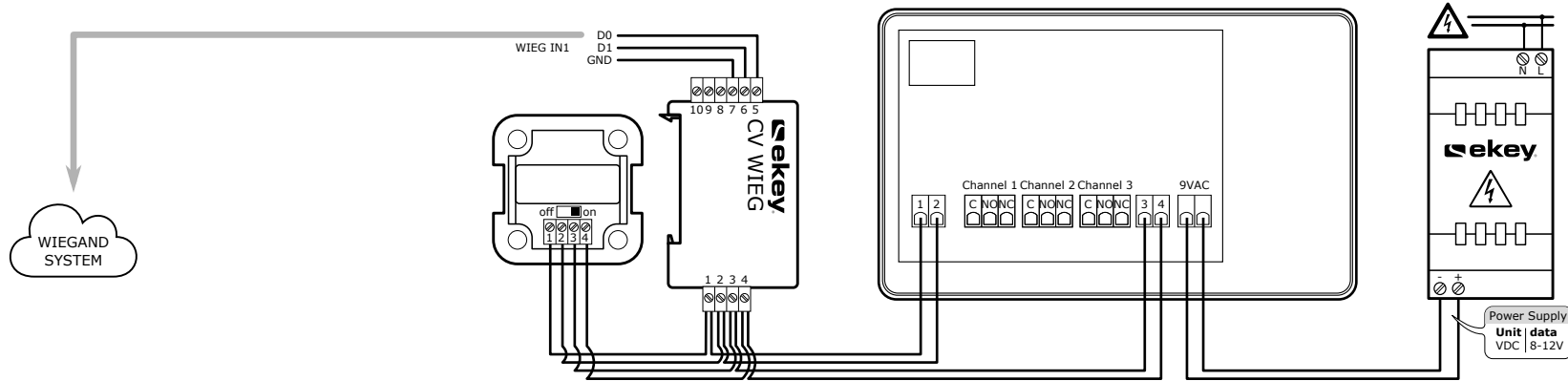
MONTAGEANLEITUNG
MOUNTING INSTRUCTIONS
MONTÁŽNÍ NÁVOD
NOTICE DE MONTAGE
ISTRUZIONI DI MONTAGGIO
MONTAGEAANWIJZING
MONTÁŽNY NÁVOD
NAVODILA ZA MONTAŽO

ID135/485: Version: 2, 05.10.2015
<http://www.ekey.net/downloads>





ekey home version

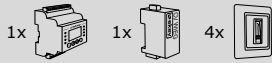


VERKABELUNGSPLAN
WIRING DIAGRAM
SCHEMA ZAPOJENÍ
SCHEMA DE CÂBLAGE
SCHEMA DI CABLAGGIO
BEKABELINGSPLAN
SCHEMA ZAPOJENIA
NAČRT OŽIČENJA

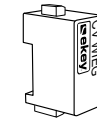
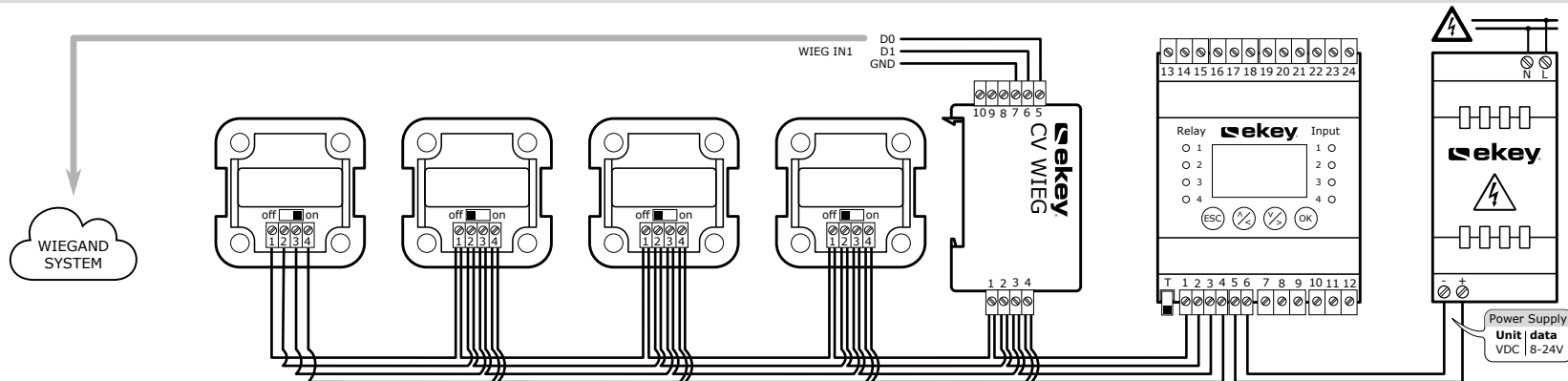
ID135/485: Version: 2, 05.10.2015
<http://www.ekey.net/downloads>

CABLE RECOMMENDATION

J-Y(ST)Y with 0.6 or 0.8mm²



ekey multi version 1



PIN	DESCRIPTION
1	RS485 (Clamp 1)
2	RS485 (Clamp 2)
3	Power supply
4	Power supply
5	WIEGAND D0
6	WIEGAND D1
7	WIEGAND GND
8	free
9	free
10	free



ekey multi version 2

